

The
Giant of
Gilfach Fargoed

Giant Mask

Instructions

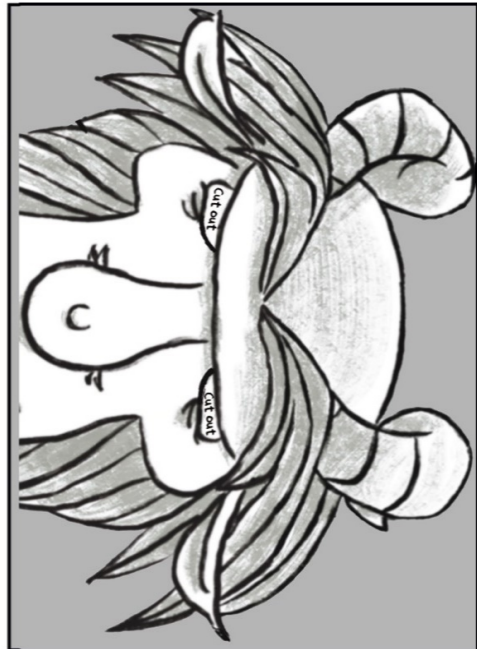
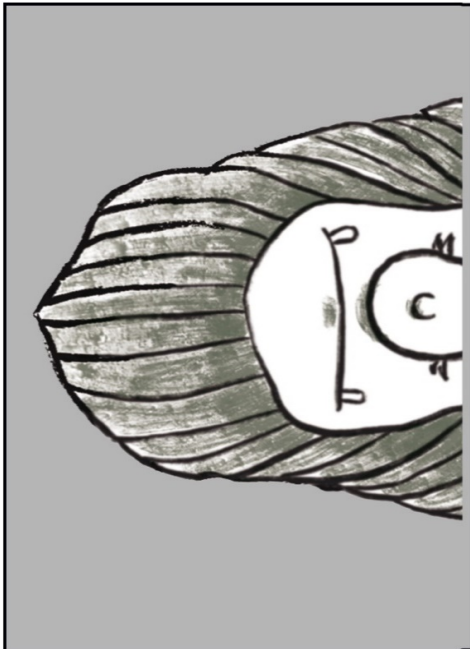
Cawl
Gilfach Fargoed

Use this kit to create your own
'The Giant of Gilfach Fargoed' mask.

It should be printed at A4 size for a standard mask.

Print out the sheets and stick them onto card board.
Or just print them straight onto white cardboard.

When you are ready to cut your mask out, cut away
the area marked in grey here. don't forget the eyes!

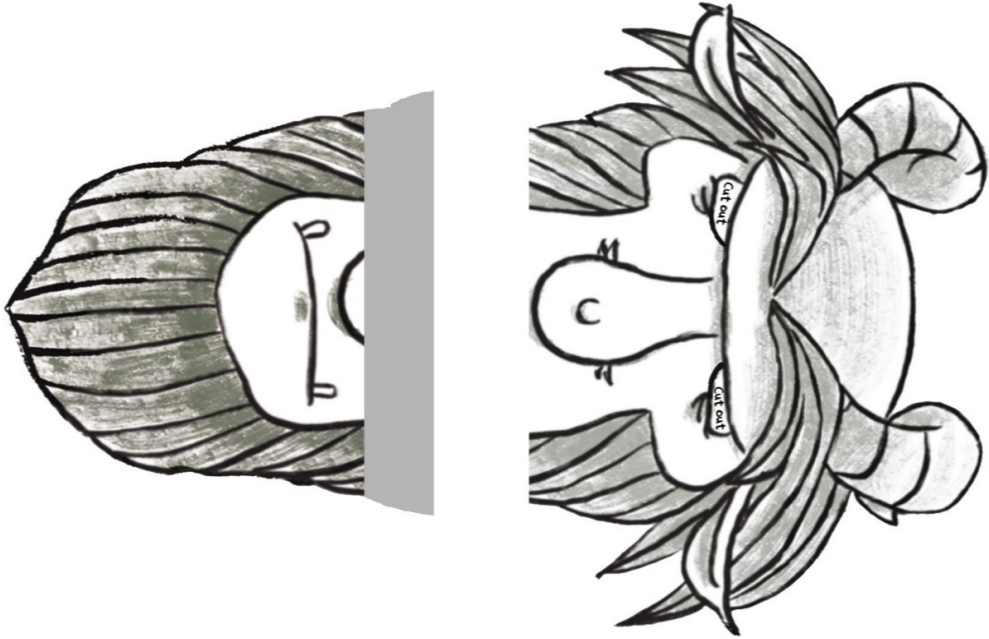


The
Giant of
Gillfach Fargod

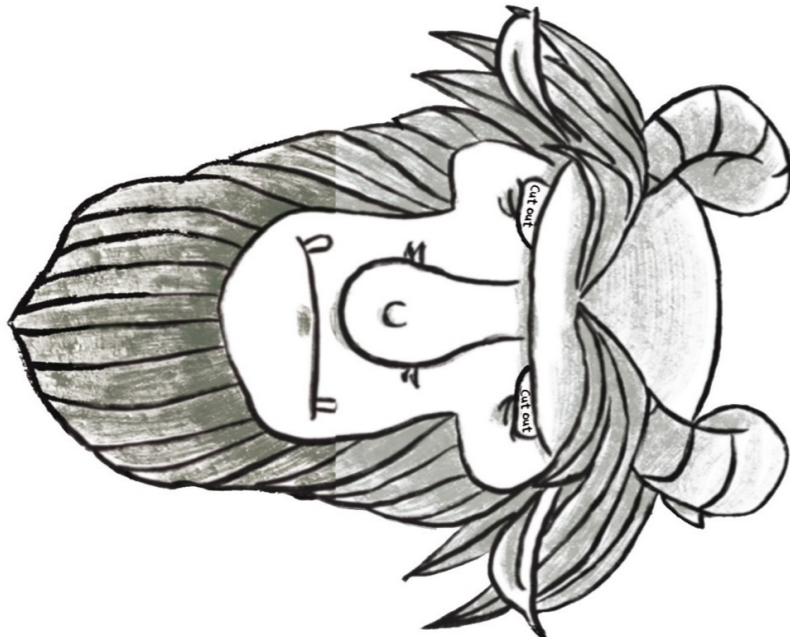
Giant Mask Instructions

Cawf
Gillfach Fargod

After cutting out your mask, use a glue stick or double sided sticky tape along the area shown in grey.



Align the two parts of the mask using the nose and beard as a guide and leave to dry.



The
Giant of
Gillfach Fargod

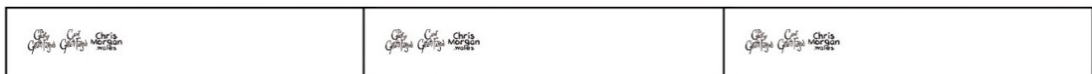
Giant Mask Instructions

Cawr
Gillfach Fargod

While you wait for the glue to dry, cut out the strips that will make the headband.



Slightly overlap each piece and stick them together with a glue stick or sticky tape..



When the headband is dry wrap it around your head until it fits snugly and stick it to make a loop.



The
Giant of
Gylfach Fargod

Giant Mask Instructions

Cawr
Gylfach Fargod

Now it's time to colour your mask in.

Find out which colours to use at www.chrismorgan.wales.

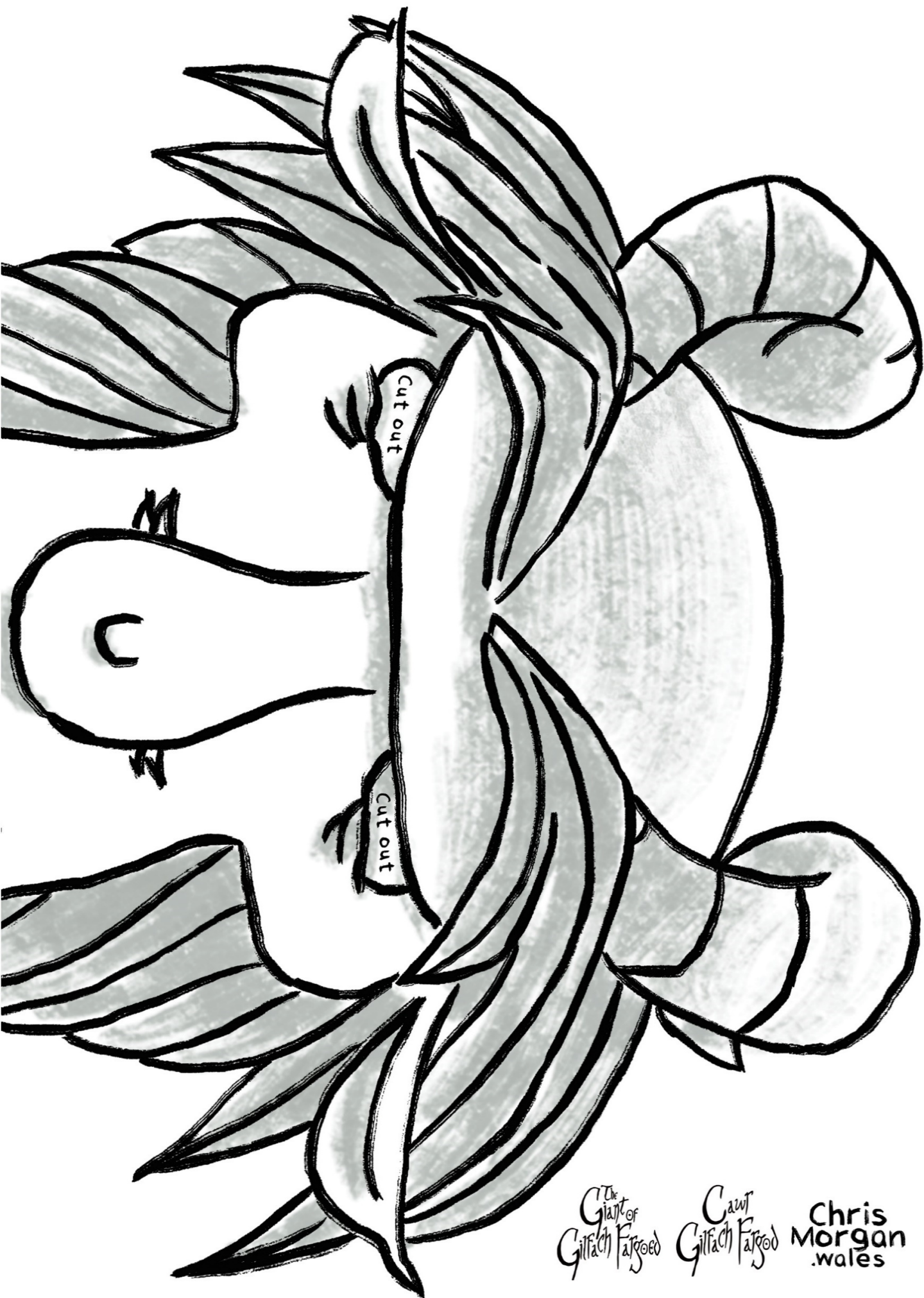
Or give the giant a completely new look!



Finally stick the headband to the back of the mask.

Remember not to cover the eye holes!

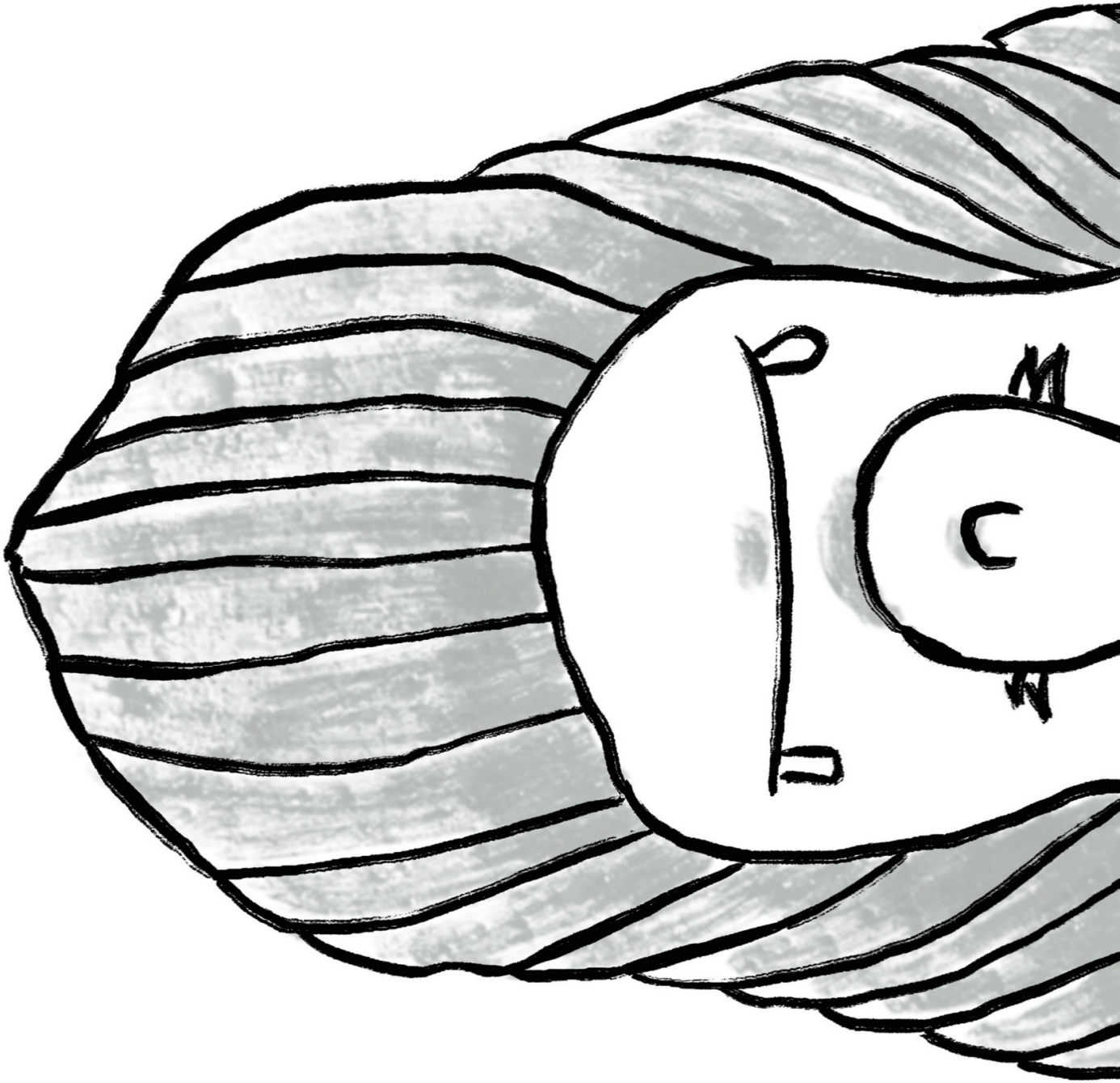




The
Giant of
Gillfach Fawod

Cawt
Gillfach Fawod

Chris
Morgan
.wales



The
Giant of
Gillfach Fawod

Cawt
Gillfach Fawod

Chris
Morgan
.wales

The
Giant of
Gillfach Fawcud

Cawt
Gillfach Fawcud

Chris
Morgan
.wales

The
Giant of
Gillfach Fawcud

Cawt
Gillfach Fawcud

Chris
Morgan
.wales

The
Giant of
Gillfach Fawcud

Cawt
Gillfach Fawcud

Chris
Morgan
.wales